

Westmorland and Furness Council Local Development Scheme 2025

(for the district outside the National Parks)



Our Place... Our **FUTURE**... Join the conversation

 Westmorland and Furness Local Plan

Version: February 2025

Contents

1.0 Introduction	3
2.0 Local Plan	4
3.0 Neighbourhood Plans	6
4.0 Community Infrastructure Levy	6
5.0 Supplementary Planning Documents and Guidance	8
6.0 Statement of Community Involvement	8
7.0 Key Programme Milestones	9
8.0 Planning Policy Area Maps	10
Map 1 – Planning Policy Framework	10
Map 2 – Planning Areas	11



1.0 Introduction

This is the Local Development Scheme (LDS) for Westmorland and Furness Council, setting out a programme for the preparation of new planning policy documents. The main focus is the production of a new local plan for Westmorland and Furness, which is proposed to also include minerals and waste policies.

Predicted timescales / dates for consultation periods are subject to change and will be updated regularly.

Westmorland and Furness Council is required to prepare and maintain a Local Development Scheme (LDS) under section 15 of the Planning and Compulsory Purchase Act 2004 (as amended).

This document LDS must specify the Local Plan document, which will make up parts of the development plan for the District and the timetable for the production of the Local Plan.

This LDS also includes details of other documents which form, or will form, part of the Development Plan for Westmorland and Furness, such as Neighbourhood Plans.

Our ability to meet the draft deadlines set is dependent on Government.

This version of the LDS is a working draft which will evolve and change significantly between now and the finalisation of the new system.

Westmorland and Furness Council replaced South Lakeland and Eden Districts, Barrow Borough and parts of Cumbria County Council on 1 April 2023. The new Council is responsible for preparing a new development plan, which will replace the legacy Local Plans of the former authorities, which will continue to apply to these areas until they are replaced. The Westmorland and Furness Consolidated Planning Policy Framework, April 2023, lists the Development Plans and other planning documents and guidance, which will continue to apply in determining planning applications until replaced.

[Westmorland and Furness Consolidated Planning Policy Framework](#) ¹

This LDS replaces all previous versions held by the District Councils.

The Lake District and Yorkshire Dales National Park Authorities are responsible for preparing Local Plans for the National Parks, including those parts which fall within Westmorland and Furness district – see section 8.0 Planning Area Maps.

¹ <https://www.southlakeland.gov.uk/media/8390/westmorland-and-furness-consolidated-planning-policy-framework-final-accessible.pdf>



Government planning policy is set out primarily within the [National Planning Policy Framework \(NPPF\)](#)², supported by the [Planning Practice Guidance](#)³ which is regularly updated.

2.0 Local Plan

The main Development Plan Document (DPD) to be produced will be the Westmorland and Furness Local Plan. This will replace the current local plans adopted by the District and Borough Councils that existed prior to April 2023.

Minerals and waste policies are contained in separate DPDs.

Existing and proposed plans are listed below.

Existing Local Plans

Existing adopted Development Plan Documents (DPDs) will continue to apply to the areas they covered previously until replaced by a new Local Plan.

Existing local plans are:

- Barrow Borough Local Plan 2016-31
- Barrow Port Area Action Plan 2010
- Cumbria Minerals and Waste Plan 2015-2030
- Eden Local Plan 2014-2032
- South Lakeland Core Strategy 2010-2025
- South Lakeland Land Allocations DPD 2013-2025
- South Lakeland Development Management Policies DPD 2019-25
- Arnsdale and Silverdale AONB DPD 2019-2034 (prepared jointly with Lancaster City Council).

Existing Local Plans can be viewed here:

[Legacy Local Plans | Westmorland and Furness Council](#)⁴

District Local Plan Reviews

The local plan reviews for South Lakeland and Eden will no longer be taken forward. The work undertaken on these reviews will feed into the new Westmorland and Furness Local Plan.

A review of the Cumbria Minerals and Waste Local Plan (CMWLP) was carried out in September 2022. None of the policies were considered to be contrary to national planning policy and guidance at that time. A number of policies were identified where an update is

² <https://www.gov.uk/government/publications/national-planning-policy-framework--2>

³ <https://www.gov.uk/government/collections/planning-practice-guidance>

⁴ <https://www.westmorlandandfurness.gov.uk/planning-and-building-control/planning/planning-policy/legacy-local-plans>



recommended. Work on any formal revision of policies was put on hold until such time as the new unitary authorities had decided how they intend to develop their minerals and waste policies going forward. Details of the CMWLP review can be viewed here:

[Cumbria Minerals and Waste Development Scheme](https://www.westmorlandandfurness.gov.uk/sites/default/files/2024-06/Minerals%20and%20Waste%20development%20scheme.pdf)⁵

Proposed Local Plans

Westmorland and Furness Local Plan

The Westmorland and Furness Local Plan will set out planning policies and propose allocations to meet the needs of the Local Plan area. It will look ahead until at least 2043 in order to ensure provision for growth for 15 years on adoption.

The key stages and likely timescales are:

- Sustainability Appraisal Scoping Report (June 2025)
- **Gateway 1 – Approval to commence** (Q3/4 2025-6)
- **Gateway 2 – Advisory (Check to proceed with Draft Plan)** – Q4 2026-27
- **Gateway 3 – Stop/Go Approval to Submit** (Q2 2027-28)
- Submission (Q2/3 2027-28)
- Examination (Q3-4 2027-28)
- Adoption (April 2028)

It is intended that the Westmorland and Furness Local Plan will replace all existing local plans in the Westmorland and Furness Council area upon adoption, including the Cumbria Minerals and Waste Local Plan. It will also include policies and any site provision required for Gypsies, Travelers and Travelling Show people.

It is the Council's intention to include minerals and waste policies and site allocations within the Westmorland and Furness Local Plan rather than to produce a separate Minerals and Waste Local Plan. It is proposed to work with Cumberland Council on collation of the evidence base, in particular the Local Aggregates Assessment and the Waste Needs Assessment.

⁵ <https://www.westmorlandandfurness.gov.uk/sites/default/files/2024-06/Minerals%20and%20Waste%20development%20scheme.pdf>



3.0 Neighbourhood Plans

Please note: The timetables for Neighbourhood Plans are set by parish councils, rather than Westmorland and Furness Council.

When Neighbourhood Development Plans are 'made' (adopted) they form part of the statutory development plan. By July 2023, 4 Neighbourhood plans in the Westmorland and Furness Council area had been made and three others were in production.

Up to date information on Neighbourhood Plans can be found on the [legacy district web sites](#)⁶

Legacy District Area	Existing Neighbourhood Plans Neighbourhood Plans have been made	Emerging Neighbourhood Plans Neighbourhood areas have been designated and Neighbourhood Plans are in preparation
Eden	<ul style="list-style-type: none">• Lazonby• Upper Eden• Penrith	<ul style="list-style-type: none">• Morland (previously submitted to the planning authority, re-submission pending)• Clifton• Ainstable
South Lakeland	<ul style="list-style-type: none">• Grange-over-Sands• Heversham and Hincaster• Allithwaite and Cartmel	

⁶ <https://www.westmorlandandfurness.gov.uk/planning-and-building-control/planning/planning-policy/legacy-local-plans/about-legacy-local-plans>



4.0 Community Infrastructure Levy

The Community Infrastructure Levy (CIL) provides a mechanism for collecting financial contributions from developers towards the provision of infrastructure to support development.

On 1 April 2023, Westmorland and Furness Council became the Community Infrastructure Levy (CIL) Charging Authority and began administering the charging schedules adopted by the former South Lakeland District Council in 2015 for the area outside the National Parks.

[Community Infrastructure Levy \(CIL\) | Westmorland and Furness](#)⁷

The Government amended the CIL Regulations in 2019, which included the aim to make the system of developer contributions more transparent and accountable. Changes include measures to ensure that consultation on preparing charging schedules is proportionate and a new requirement to prepare and publish an 'Infrastructure Funding Statement' each year. The Westmorland and Furness Infrastructure Funding Statement for 2023-24 is available to view here [IFS 2023-24 accessible version](#)⁸ and here [Infrastructure planning policy documents | Westmorland and Furness Council](#)⁹

The Government requires that Local Plans should set out the contributions expected from development and that the viability of all relevant policies including the cost implications of CIL and S106 should be taken into account at plan making stage. Development of the proposed Westmorland and Furness Local Plan will require the review of evidence relating to infrastructure needs and viability and presents an opportunity to prepare a single replacement CIL charging schedule for the new plan area. This will be undertaken alongside or ahead of the preparation of the Local Plan.

⁷ <https://www.westmorlandandfurness.gov.uk/planning-and-building-control/planning/community-infrastructure-levy-cil>

⁸ [https://www.westmorlandandfurness.gov.uk/sites/default/files/2024-12/IFS 2023-24 accessible version.pdf](https://www.westmorlandandfurness.gov.uk/sites/default/files/2024-12/IFS%2023-24%20accessible%20version.pdf)

⁹ <https://www.westmorlandandfurness.gov.uk/planning-and-building-control/planning/planning-policy/infrastructure-planning-policy-documents>



5.0 Supplementary Planning Documents and Guidance

Supplementary Planning Documents (SPDs) add more detail and assist in implementation of the policies in adopted local plans. The adopted Supplementary Planning Documents (SPDs) and Guidance (SPGs) adopted or prepared by the former local planning authorities will continue to apply to the areas they covered prior to 1 April 2023. These are listed in the Westmorland and Furness Consolidated Planning Policy Framework, April 2023, in the following sections: [Westmorland and Furness Consolidated Planning Policy Framework¹⁰](#)

- Table 3 - Supplementary Planning Documents
- Table 5 - Conservation Area Appraisals and Management Plans
- Table 6 – AONB Management Plans
- Table 7 - Supplementary Planning Guidance, Informal Policy/Guidance and Policy Support Documents

In addition, an SPD has been prepared for Marina Village Residential Opportunity, a council owned allocated site in Barrow in Furness, it will be adopted in March/April 2025.

It is proposed to prepare a **Design Code** Supplementary Planning Document in advance of the adoption of the Westmorland and Furness Local Plan. The Design Code SPD will therefore relate to relevant policies in the adopted Local Plans of the former district local planning authorities.

Other SPDs may be produced to add more detail and assist in implementation of the policies in the local plan.

6.0 Statement of Community Involvement

A Statement of Community Involvement (SCI) is statutory document which sets out how Westmorland and Furness Council will involve the community and stakeholders in the preparation and review of planning policy documents, including Neighbourhood Plans, and also in making decisions on planning applications. In preparing a planning policy document the Council must comply with the requirements set out in a Statement of Community Involvement.

A Statement of Community Involvement for Westmorland and Furness is currently in preparation.

¹⁰ <https://www.southlakeland.gov.uk/media/8390/westmorland-and-furness-consolidated-planning-policy-framework-final-accessible.pdf>



7.0 Key Programme Milestones

The following table outlines the key programme milestones for the production of Development Plan Documents.

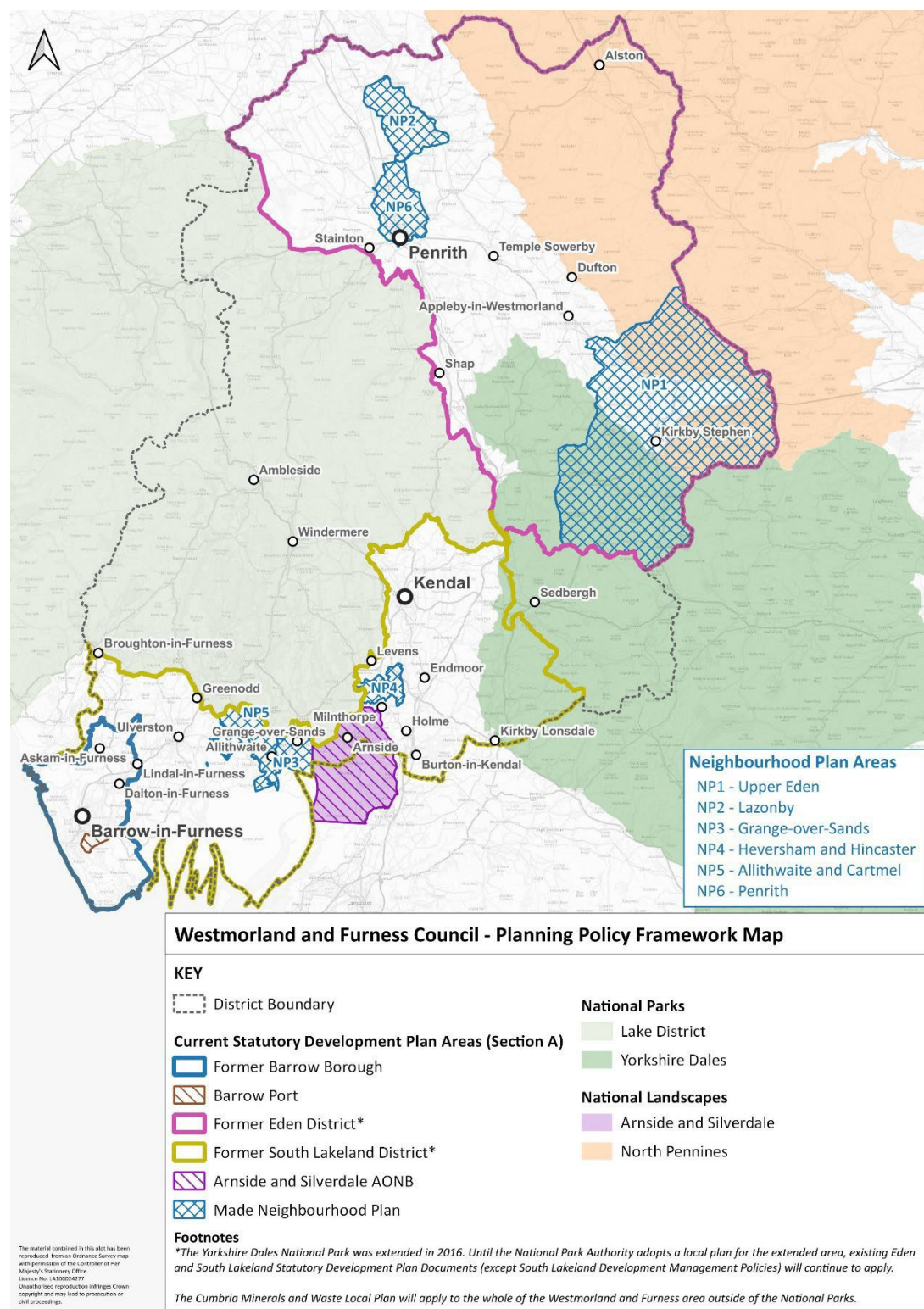
All timescales are indicative and may be subject to change once further information on the new plan making process are confirmed by Government.

Milestone	Date
Sustainability Appraisal Scoping Report	June 2025
Gateway 1 – Approval to commence	Q3/4 2025-6 (December 2025)
Gateway 2 – Advisory – Check to proceed with Draft Plan	Q4 2026-27 (March 2027)
Gateway 3 – Stop/Go Approval to Submit	Q2 2027-28 (September 2027)
Submission	Q2 2027-28 (September/ October 2027)
Examination	Q3-4 2027-28 (October 2027)
Adoption	April 2028



8.0 Planning Policy Area Maps

Map 1 – Planning Policy Framework



Map 2 – Planning Areas

