



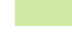

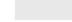


LEGEND

-  Westmorland and Furness Local Authority Planning Area - North
-  Main Rivers
- Management Catchments**
-  Eden and Esk
-  Lune
-  Swale Ure Nidd and Ouse Upper
-  Tees
-  Tyne

NOTES
Esri, Intermap, NASA, NGA, USGS, Sources: Esri, TomTom, Garmin, FAO, NOAA, USGS, © OpenStreetMap contributors, and the GIS User Community, Esri, USGS

Main Rivers - © Environment Agency copyright and/or database right 2025. All rights reserved. Downloaded 02/09/2024.

Management Catchments - Contains public sector information licensed under the Open Government Licence v3.0. Downloaded 10/10/2024.

ISSUE PURPOSE

FINAL

PROJECT NUMBER

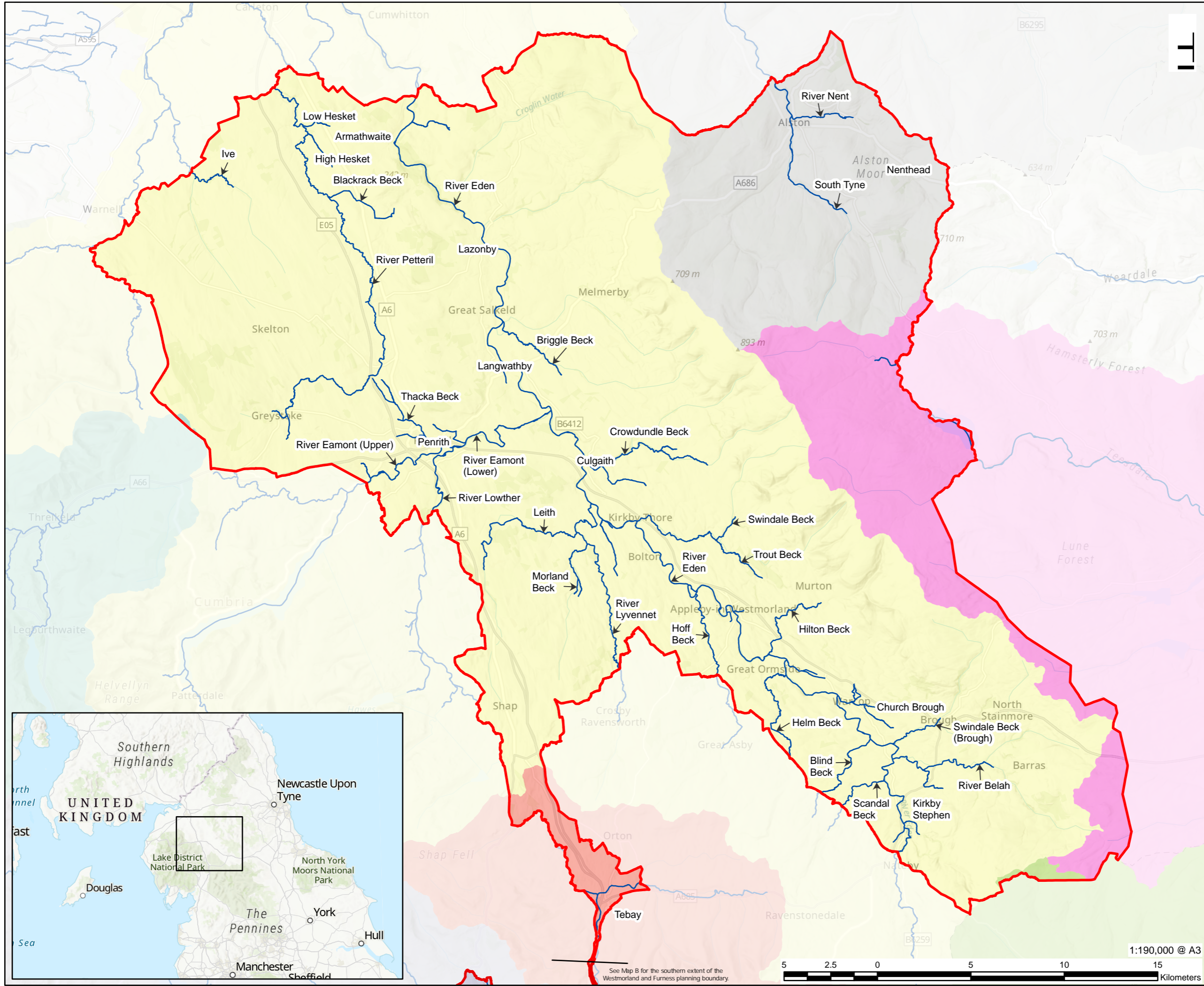
60734993

FIGURE TITLE

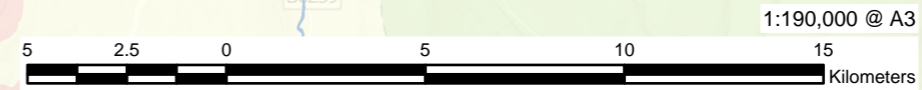
North - Watercourses and Management Catchments

MAP NUMBER

Map 005a



See Map B for the southern extent of the Westmorland and Furness planning boundary.



This drawing has been prepared for the user of AECOM's client. It may not be used, modified, reproduced or relied upon by third parties, except as agreed by AECOM or as required by law. AECOM disclaims any responsibility, and denies any liability whatsoever, for any party's reliance on or use of this drawing without AECOM's express written consent. Do not scale. All measurements must be obtained from the stated dimensions.