

AECOM

PROJECT
Westmorland Level 1 Strategic Flood Risk Assessment

CLIENT
 Westmorland & Furness Council

CONSULTANT
AECOM Limited
100 Embankment, Cathedral Approach
Manchester, M3 7FB
www.aecom.com

LEGEND

Westmorland and Furness Local Authority Planning Area

1% AEP Flood Depths

- Below 100 mm
- 100 - 150 mm
- 150 - 300 mm
- 300 - 600 mm
- 600 - 900 mm
- 900 - 1200 mm
- Over 1200 mm

NOTES

Esri, Intermap, NASA, NGA, USGS, Sources: Esri, TomTom, Garmin, FAO, NOAA, USGS, © OpenStreetMap contributors, and the GIS User Community, Esri, USGS

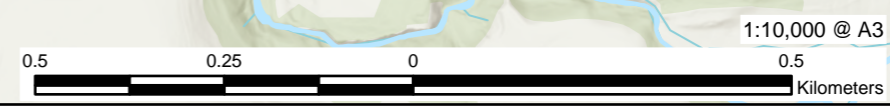
Tetra Tech (2023) Surface Water Mapping and Modelling for Kirkby Stephen

ISSUE PURPOSE
FINAL

PROJECT NUMBER
6734993

FIGURE TITLE
Kirkby Stephen - Detailed Surface Water Modelling Study

MAP NUMBER
Map 010f



This drawing has been prepared for the use of AECOM's client. It may not be used, modified, reproduced or relied upon by third parties, except as signed by AECOM or as required by law. AECOM disclaims any responsibility, and denies any liability whatsoever, for any party's reliance on this drawing without AECOM's express written consent. Do not scale. All measurements must be obtained from the stated dimensions.