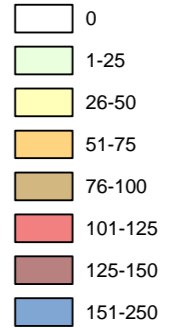


**Reported Incidents of Sewer Flooding (2009-2024)**



**NOTES**  
Esri, Intermap, NASA, NGA, USGS, Sources: Esri, TomTom, Garmin, FAO, NOAA, USGS, © OpenStreetMap contributors, and the GIS User Community, Esri, USGS

© UU copyright and/or database right 2025. All rights reserved

Northumbrian Water - © NWL copyright and/or database right 2025. All rights reserved.

**ISSUE PURPOSE**

FINAL

**PROJECT NUMBER**

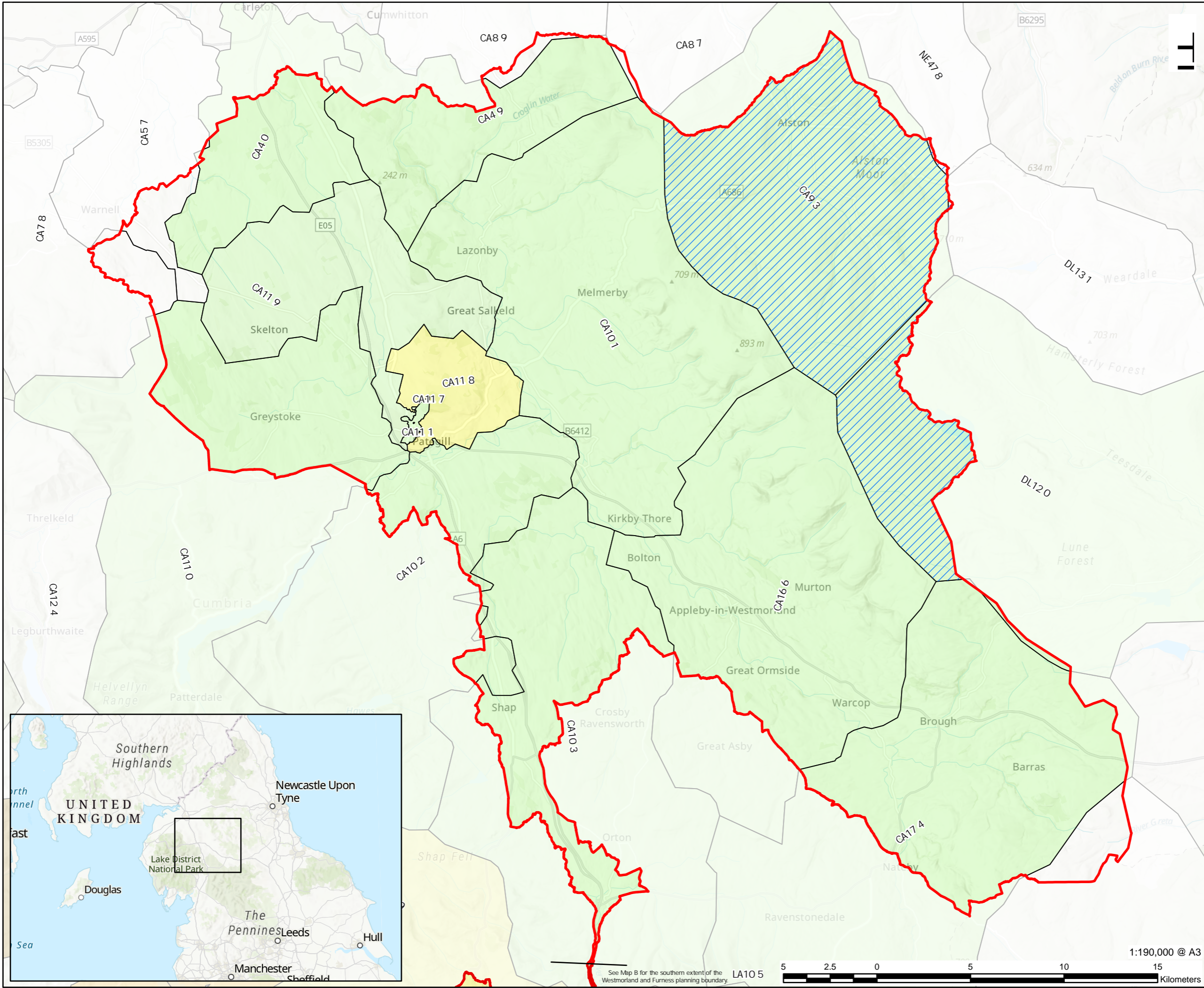
60734993

**FIGURE TITLE**

North - Records of Sewer Flooding by Postcode (DG5s)

**MAP NUMBER**

Map 012a



See Map B for the southern extent of the Westmorland and Furness planning boundary.



1:190,000 @ A3

