

AECOM

PROJECT
Westmorland Level 1 Strategic Flood Risk Assessment

CLIENT
 Westmorland & Furness Council

CONSULTANT
AECOM Limited
100 Embankment, Cathedral Approach
Manchester, M3 7FB
www.aecom.com

LEGEND

- Westmorland and Furness Local Authority Planning Area - South
- Shoreline Management Plan Interventions 2105**
- Hold The Line SMP Intervention 2105
- Managed Realignment SMP Intervention 2105
- No Active Intervention SMP Intervention 2105
- No Future Interventions 2105
- NCERM 2105 + 70% CC
- NCERM 2105 + 95% CC

NOTES

Esri, Intermap, NASA, NGA, USGS, Sources: Esri, TomTom, Garmin, FAO, NOAA, USGS, © OpenStreetMap contributors, and the GIS User Community, Esri, USGS

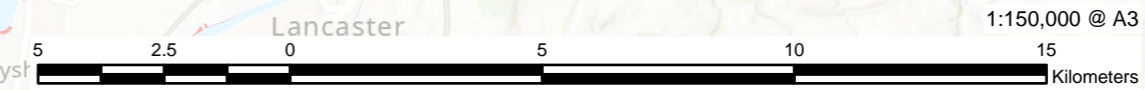
© Environment Agency copyright and/or database right 2025. All rights reserved.

ISSUE PURPOSE
FINAL

PROJECT NUMBER
60734993

FIGURE TITLE
South - National Coastal Erosion Risk Mapping (NCERM) 2105

MAP NUMBER
Map 014b



This drawing has been prepared for the use of AECOM's client. It may not be used, modified, reproduced or relied upon by third parties, except as signed by AECOM or as required by law. AECOM accepts no responsibility, and denies any liability whatsoever, to any party that uses or relies on this drawing without AECOM's express written consent. Do not scale. All measurements must be obtained from the stated dimensions.