

AECOM

PROJECT
Westmorland Level 1 Strategic Flood Risk Assessment

CLIENT
 Westmorland & Furness Council

CONSULTANT
AECOM Limited
100 Embankment, Cathedral Approach
Manchester, M3 7FB
www.aecom.com

LEGEND

- Westmorland and Furness Local Authority Planning Area - South
- SuDS Infiltration**
 - Highly compatible for infiltration SuDS
 - Probably compatible for infiltration SuDS
 - Opportunities for bespoke infiltration SuDS
 - Very significant constraints are indicated

NOTES

Esri, Intermap, NASA, NGA, USGS, Sources: Esri, TomTom, Garmin, FAO, NOAA, USGS, © OpenStreetMap contributors, and the GIS User Community, Esri, USGS

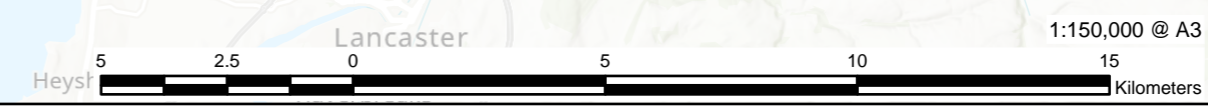
Contains BGS Digital Data. Derived from 1:50,000 scale BGS Digital Data under Licence No. 2024/32A British Geological Survey © and Database Right UKRI. All rights reserved. Contains Ordnance Survey data © Crown copyright and database right 2023.

ISSUE PURPOSE
FINAL

PROJECT NUMBER
60734993

FIGURE TITLE
South - BGS Infiltration SuDS Suitability

MAP NUMBER
Map 015b



This drawing has been prepared for the use of AECOM's client. It may not be used, modified, reproduced or relied upon by third parties, except as agreed by AECOM or as required by law. AECOM accepts no responsibility, and denies any liability whatsoever, for any party's reliance on or use of this drawing without AECOM's express written consent. Do not scale. All measurements must be obtained from the stated dimensions.