



**AECOM**

**PROJECT**  
Westmorland Level 1 Strategic Flood Risk Assessment

**CLIENT**  
 Westmorland & Furness Council

**CONSULTANT**  
AECOM Limited  
100 Embankment, Cathedral Approach  
Manchester, M3 7FB  
www.aecom.com

**LEGEND**

- Westmorland and Furness Local Authority Planning Area - North
- Main Rivers
- Flood Warning Areas
- Flood Alert Areas

**NOTES**

Esri, Intermap, NASA, NGA, USGS, Sources: Esri, TomTom, Garmin, FAO, NOAA, USGS, © OpenStreetMap contributors, and the GIS User Community, Esri, USGS

© Environment Agency copyright and/or database right 2025. All rights reserved.

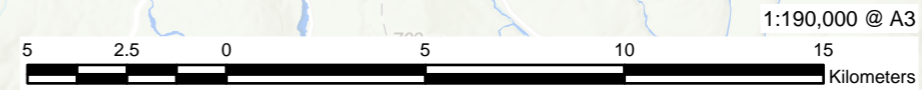
**ISSUE PURPOSE**  
FINAL

**PROJECT NUMBER**  
60734993

**FIGURE TITLE**  
North - Environment Agency Flood Alert and Flood Warning Areas

**MAP NUMBER**  
Map 016a

This drawing has been prepared for the use of AECOM's client. It may not be used, modified, reproduced or relied upon by third parties, except as signed by AECOM or as required by law. AECOM accepts no responsibility, and denies any liability whatsoever, for any party's reliance on or use of this drawing without AECOM's express written consent. Do not scale. All measurements must be obtained from the stated dimensions.



See Map B for the southern extent of the Westmorland and Furness planning boundary.